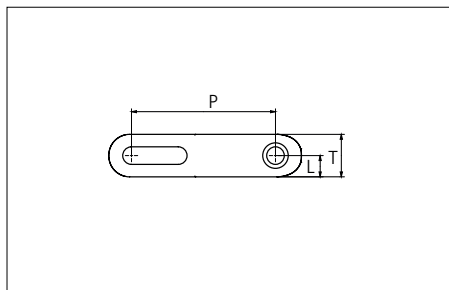


Plastic Modular Belt

Series **uni Flex L-OSB** Type **65% Open Radius 2.2**



Sideflexing belt
 Nominal pitch: 50.8 mm (2.00 in)
 Surface type: Open
 Surface opening: 65%
 Backflex radius: 65.0 mm (2,56 in)
 Pin diameter: 6.0 mm (0.24 in)
 Min. inside radius: R2.2 x belt width

Belt material & color	POM-D B	PP B		mm	in		mm	in	
				P (Nominal)	50.8	2.00	T	15.0	0.59
Pin and lock material & color	PA6.6 B			L	7.5	0.29	-	-	-

Non standard material and color: See uni Material and Color Overview.

Alternative pin and lock materials:

✂ Snap Pin A1: PP **W** PBT **LG** PA6.6 **B** ✂ Lockpin: PBT **LG**

Belt width		Permissible tensile force (Belt/pin material)								Belt weight (Belt/pin material)				*Min. No. drive sprocket per shaft	Number of wear strips (Min. No.)	
		POM-D/PA6.6				PP/PA6.6				POM-D/PA6.6		PP/PA6.6			**Carry (pcs)	**Return (pcs)
		Straight sections	Curve sections	Straight sections	Curve sections	kg/m	lb/ft	kg/m	lb/ft							
mm	in	N	lbf	N	lbf	N	lbf	N	lbf	kg/m	lb/ft	kg/m	lb/ft			
305	12.0	5429	1220	3300	742	4087	919	2080	468	2.0	1.36	1.5	0.99	3	3	2
407	16.0	6490	1459	3300	742	4923	1107	2080	468	2.7	1.82	2.0	1.32	3	3	2
509	20.0	7551	1697	3300	742	5760	1295	2080	468	3.4	2.27	2.5	1.65	5	4	2
610	24.0	8601	1934	3300	742	6588	1481	2080	468	4.1	2.72	2.9	1.98	5	5	3
712	28.0	9662	2172	3300	742	7424	1669	2080	468	4.7	3.18	3.4	2.31	5	5	3
813	32.0	10712	2408	3300	742	8253	1855	2080	468	5.4	3.63	3.9	2.64	7	6	3
915	36.0	11773	2647	3300	742	9089	2043	2080	468	6.1	4.08	4.4	2.97	7	7	4
1016	40.0	12823	2883	3300	742	9917	2229	2080	468	6.7	4.53	4.9	3.30	7	7	4
1118	44.0	13884	3121	3300	742	10754	2417	2080	468	7.4	4.99	5.4	3.63	9	8	4
1219	48.0	14935	3357	3300	742	11582	2604	2080	468	8.1	5.44	5.9	3.96	9	9	5
1321	52.0	15995	3596	3300	742	12418	2792	2080	468	8.8	5.89	6.4	4.29	9	9	5
1422	56.0	17046	3832	3300	742	13246	2978	2080	468	9.4	6.35	6.9	4.62	11	10	5
1524	60.0	18107	4070	3300	742	14083	3166	2080	468	10.1	6.80	7.4	4.95	11	11	6
1626	64.0	19167	4309	3300	742	14919	3354	2080	468	10.8	7.26	7.9	5.28	11	11	6
1727	68.0	20218	4545	3300	742	15747	3540	2080	468	11.5	7.71	8.3	5.61	13	12	6

Additional standard belt widths are available in steps of 101.6 mm (4.00 in). Additional non-standard belt widths are available in steps of mm 50.8 (2.00 in).

1930	76.0	22329	5020	3300	742	17412	3914	2080	468	12.8	8.61	9.3	6.26	13	13	7
------	------	-------	------	------	-----	-------	------	------	-----	------	------	-----	------	----	----	---

General belt tolerance is +0/-0.4% at 23°C/73°F. For exact belt width contact Customer Service.

*Max load per Drive Sprocket. Belt material: POM-D 1000 N (225 lbf), PP 550 N (123 lbf).

**Max spacing between wear strips, Carry: 152 mm (6 in); Return: 304 mm (12 in).

Belt needs support rollers or flanged rollers at each belt edge for support.

= Single Link

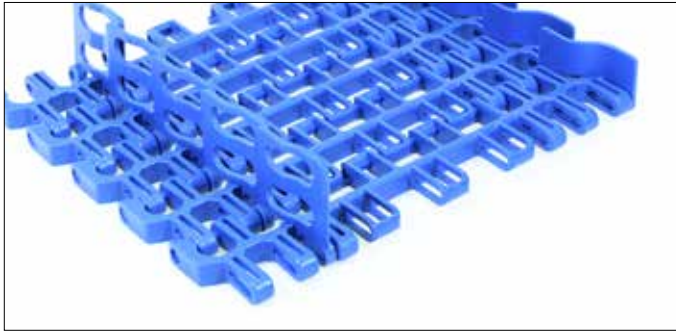
STANDARD

SIDE FLEXING

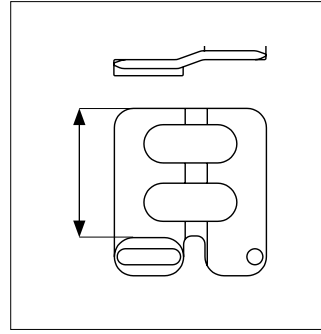
PITCH 50.8 MM/2.00 IN

Accessories

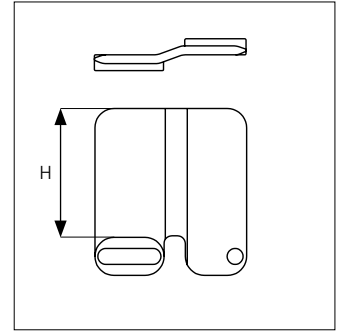
Side Guard



Side Guard Open



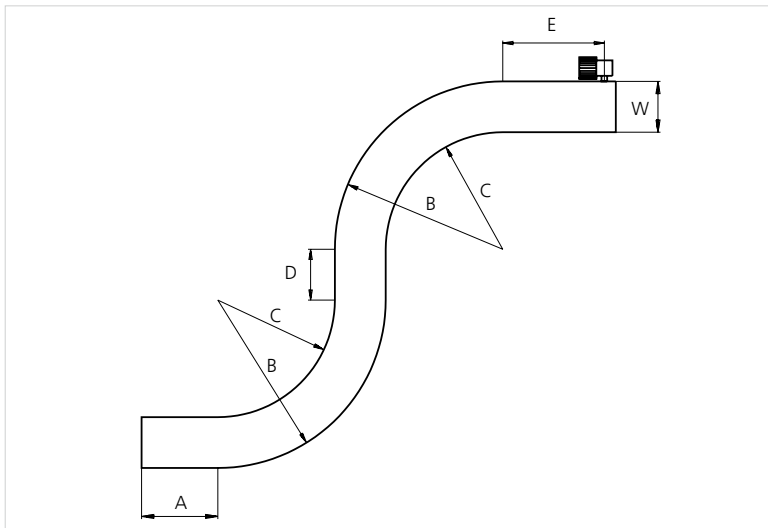
Side Guard



Type	Side Guard Material & color	H	
		mm	in
Side Guard	POM-D B W	10.0	0.39
		25.4	1.00
		50.0	1.97
Side Guard Open		50.0	1.97

* Min. indent for Side Guard is: 80.0 mm (3.15 in) and Increment 25.4 mm (1.00 in)
Non Standard material and color: See uni Material and Color Overview.

Design Guidelines



uni Flex L-OSB 65% Open Radius 2.2	
A	min. 1.5 x W
B	min 3.2 x W
C	min 2.2 x W
D	min 2 x W
E	min 2 x W, min.
W	Belt width

Any questions? Please contact us.

Morskate Aandrijvingen BV

Oosterveldsingel 47A
7558 PJ Hengelo (Ov)
The Netherlands

NL

T +31 (0)74 - 760 11 11
info@morskateaandrijvingen.nl
www.morskateaandrijvingen.nl

DE

T +49 692 - 222 34 95
info@morskateantriebstechnik.de
www.morskateantriebstechnik.de

EN

T +31 (0)74 - 760 11 11
info@morskatedrivetechnology.com
www.morskatedrivetechnology.com

